



General Luminaire Installation Instructions

Slēk & GEO Series

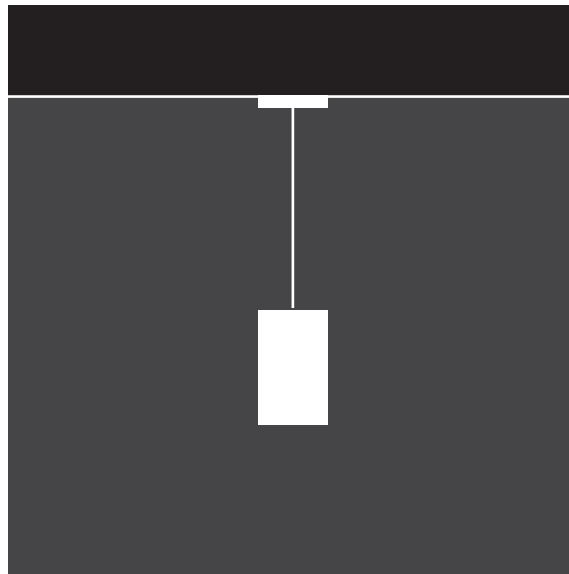
WARNING

RISK OF DEATH, INJURY, OR PROPERTY DAMAGE FROM FIRE, ELECTRIC SHOCK, AND OTHER HAZARDS

- De-energize the circuit and/or equipment before connecting to, disconnecting from, or servicing electrical equipment
- Make sure the equipment is properly grounded.
- Read this document in full prior to installing, servicing, or maintaining this equipment. These instructions do not cover all installation, service, and maintenance situations. If your situation is not covered, or, if you do not understand these instructions or need additional information, contact Lumato Lighting or your local Lumato Lighting distributor.
- Installation and maintenance must be performed by qualified personnel familiar with the construction and operation of this product. All applicable local and national codes and ordinances must be followed.

REQUIRED TOOLS

- Power Drill w/ #2 Philips Head Bit - Torque ≤ 10
- Wire Strippers
- Box/Beam Level
- Clorox (or similar) Cleaner
 - In case of lens smudge during installation



Slēk Series
1.13in x 1.88in

SAVE THESE INSTALLATION INSTRUCTIONS

Table of Contents

Mounting Options.....Page 3

Slēk

FI: Individual (ex: SLK-ID-04-F1-XXX-XXX-XXX).....Page 4

Row Mounting.....Page 5

FS: Row Starter (ex: SLK-ID-04-FS-XXX-XXX-XXX).....Page 6

FJ: Row Joiner (ex: SLK-ID-04-FJ-XXX-XXX-XXX).....Page 7

FE: Row Ender (ex: SLK-ID-04-FE-XXX-XXX-XXX).....Page 8

Lens and End Cap Install.....Page 9

GEO Series

Corner Assembly.....Page 10

F-J & F-S: GEO Joiner and Starter (ex: SLK-ID-04-F-J-XXX-XXX-XXX).....Page 11

F-E1/F-E2/F-E3/F-E4: GEO Ender (ex: SLK-ID-04-F-E1-XXX-XXX-XXX).....Page 12

Remote Power Unit.....Page 13

Hanging Hardware

Feed: T1/T9/SC Above Grid.....Page 14-15

Feed: HC - Hard Ceiling.....Page 16

Non-Feed: T1/T9/SC Above Grid.....Page 17

Non-Feed: HC - Hard Ceiling.....Page 18

IMPORTANT

Luminaire and Remote Power Supply Part Number Matching

1. Luminaire and the Remote Power Supply Catalog Numbers must match except the following:
 - a. Position
 - i. Luminaire: -FI, -FS, -FJ, -FE
 - ii. Remote Power Supply: -BXS, -BXL
 - b. Color Temperature
 - iii. Remote Power Supply: NO CCT (Color Temp) is in the catalog number.
 - c. Example: The Black "circled" characters must be the same to ensure the light is illuminates correctly. Contact factory for more questions.

Luminaire	ABC - DE - FG	FI	H - IJ - KLM	35	NO - P - QRS	TU
Remote Power Unit	ABC - DE - FG	BXS	H - IJ - KLM		NO - P - QRS	

SAVE THESE INSTALLATION INSTRUCTIONS

Mounting Options

Slēk & GEO Series

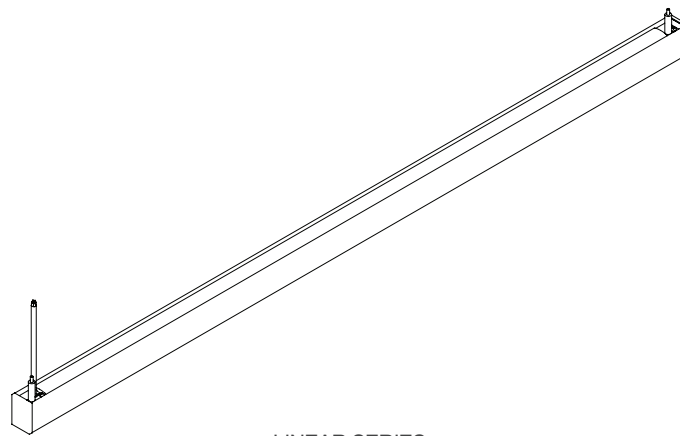
CABLE MOUNTING “ON GRID” (T1, T9, & SC)

- Linear suspended Slēk Series luminaires intended for “On Grid” or “Tee Bar Ceiling” cable mounting are to be installed with T1 (1” T-Grid), T9 (9/16” T-Grid), or SC (Screw Slot Grid) Feed and Hanger Kits. Feed and Hanger Kits are shipped separately. (Figure 15)

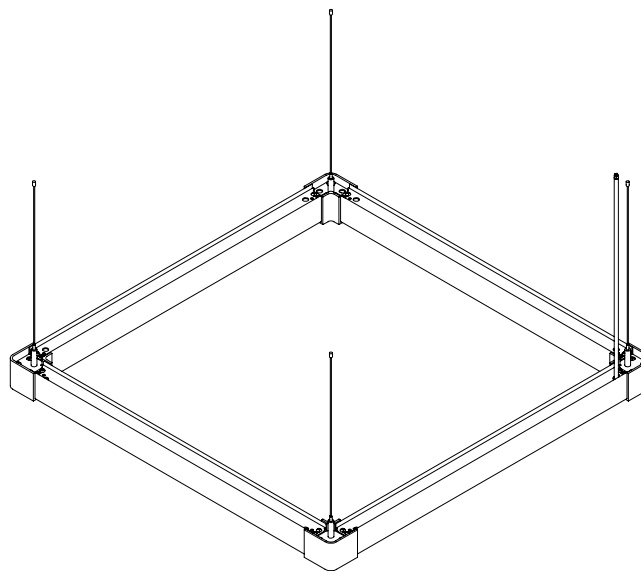
CABLE MOUNTING “OFF GRID” (HC & JB)

- Linear suspended Slēk Series luminaires intended for cable mounting are to be installed with HC (Hard Ceiling) or JB (Junction Box) Feed and Hanger Kits. Feed and Hanger Kits are shipped separately. (Figure 13 and 14)

Figure 1



LINEAR SERIES



GEO SERIES

SAVE THESE INSTALLATION INSTRUCTIONS

Individual Fixture Installation

Slēk Series

1. Locate and unpackaged fixture.
2. Locate the suspension cable locations as shown in the submittal drawing, suspend the fixture by feeding the 1/16" aircraft cable through each cable gripper. Move and level the fixture to specified position and tighten the cable gripper nut to lock the 1/16" steel cable.
3. Cut off excess cable.
4. Leave approximately 1/2" for minor adjustments. See Figure 3.

Figure 2

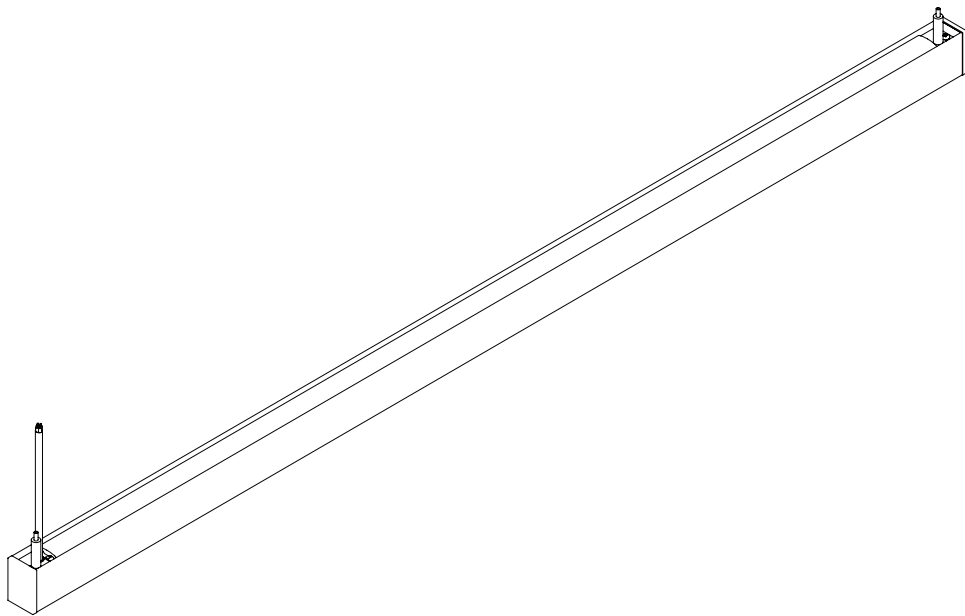
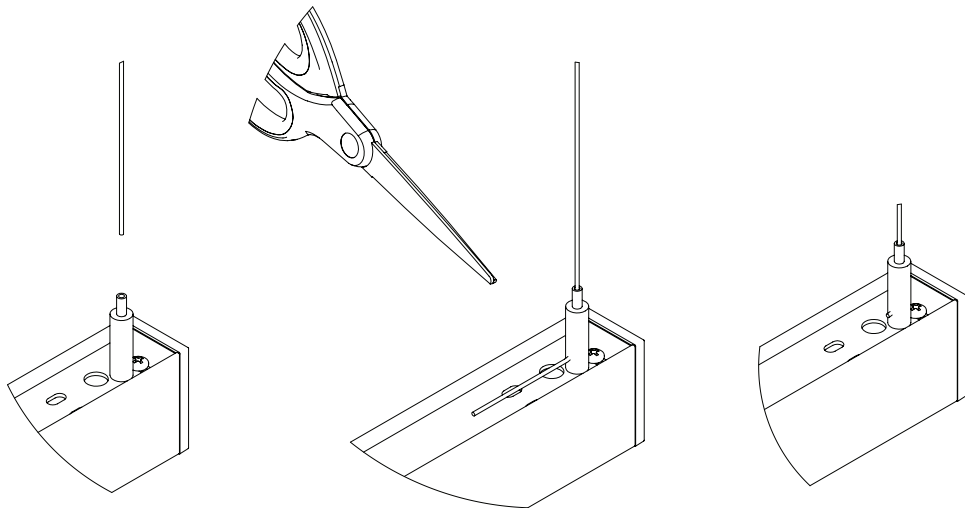


Figure 3



SAVE THESE INSTALLATION INSTRUCTIONS

Row Mount Installation Instructions

Sl k Series

WARNING

Attempt to assemble a Continuous Row Luminaire on the ground and lifting row into the position may create stress at connection points and may result in damage and/or mechanical failure. Fixtures are meant to be installed at height.

REQUIRED TOOLS

- Power Drill w/ #2 Philips Head Bit - Torque ≤ 10
- Wire Strippers
- Box/Beam Level
- Clorox (or similar) Cleaner
 - In case of lens smudge during installation

1. Locate and identify all Fixtures and Lens Kits that are needed to build the run. All Runs are built of Starter, Joiner, and Ender fixtures with a continuous roll-in lens that is installed after the fixtures are hung. Consult the provided submittal drawing to reference these parts.

Row Mount Installation Instruction

Row Layouts

1. Each fixture has its own remote power unit. Follow submittal drawing for specific locations.

Figure 4



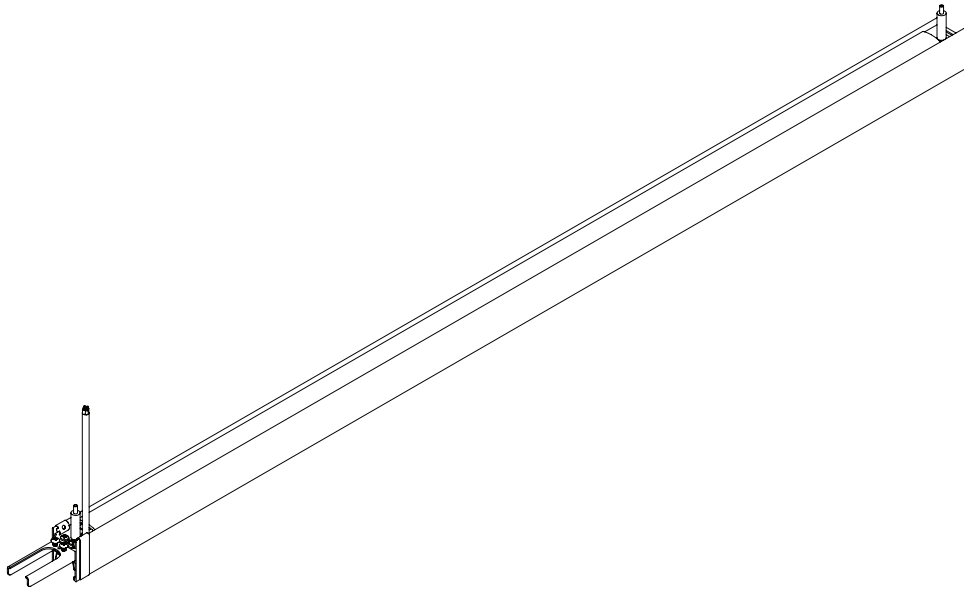
Row Mount Installation Instructions (Continued)

Slēk Series

Starter Fixtures (-FS)

1. Locate and identify the Starter fixture for the run. Note that this fixture has no end cap and has the male joining bracket and joining biscuits protruding from one side of the fixture.
2. Locate the suspension cable locations as shown in the submittal drawing and referencing suspension, suspend the fixture by feeding the 1/16" aircraft cable through each cable gripper. The side with the male joining bracket & sliding light shield is to be oriented toward the rest of the run. Move and level the fixture to specified position and tighten the cable gripper nut to lock the 1/16" steel cable.
3. Cut off excess cable.
4. Leave approximately 1/2" for minor adjustments. See Figure 3

Figure 5



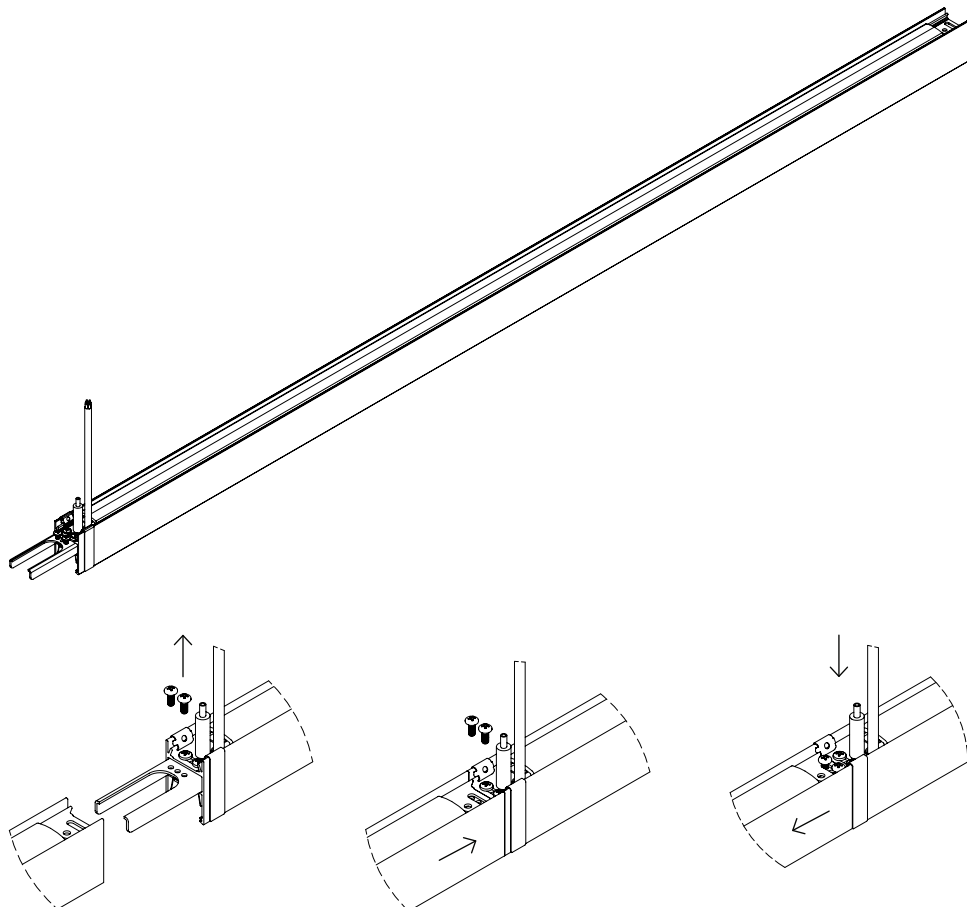
Row Mount Installation Instructions (Continued)

Slēk Series

Joiner (-FJ)

1. Locate the next fixture in the run by referencing the submittal and aligning the female joining side to the preceding male joining bracket protruding from the fixture.
2. Locate the suspension cable locations as shown in the submittal drawing and referencing suspension, suspend the fixture by feeding the 1/16" aircraft cable through the cable gripper. The side with the male joining bracket & sliding light shield is to be oriented toward the rest of the run. Move and level the fixture to specified position and tighten the cable gripper nut to lock the 1/16" steel cable.
3. Remove the screws extra screws in male joining bracket with screw driver
4. Slide both fixtures together
5. Put screws back in place to join the two fixtures together.
6. Slide the Light Shield into place on both sides.

Figure 6



SAVE THESE INSTALLATION INSTRUCTIONS

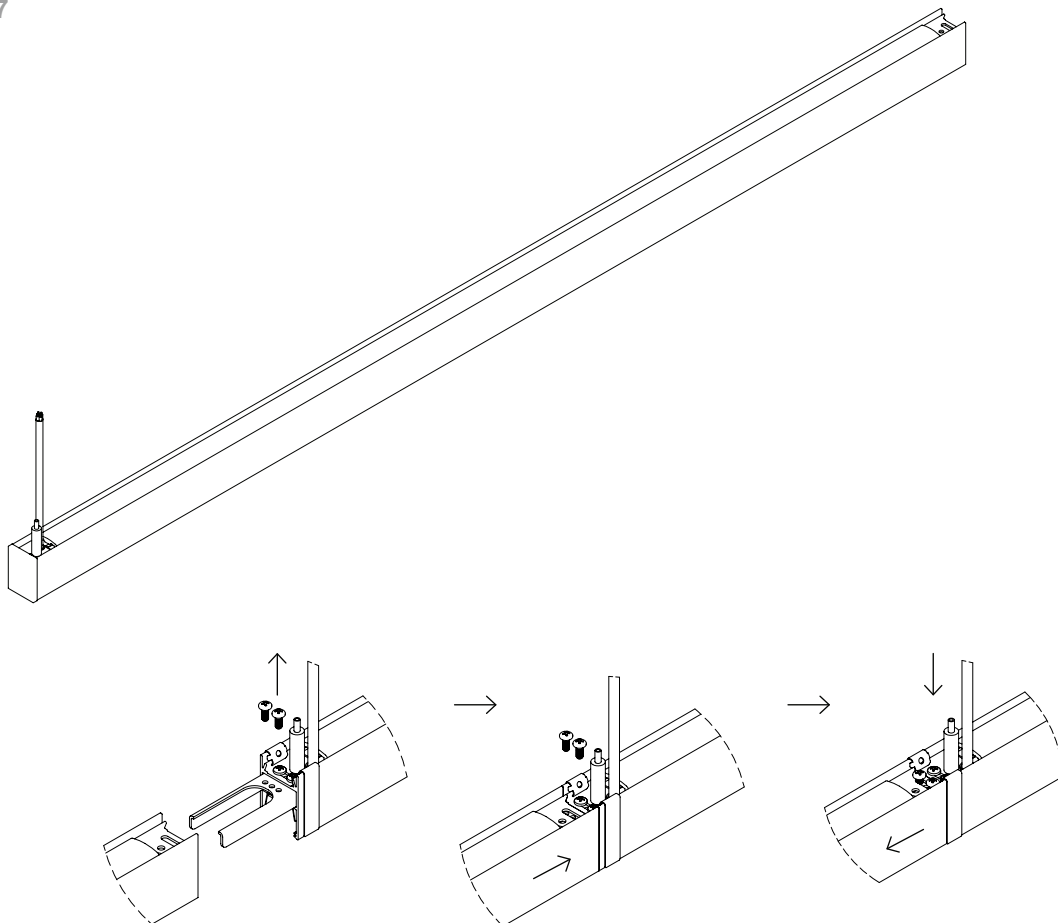
Row Mount Installation Instructions (Continued)

Slēk Series

Ender (-FE)

1. Locate the final fixture in the run by referencing the submittal and aligning the female joining side to the preceding male joining bracket protruding from the fixture. Locate the suspension cable locations as shown in the submittal drawing and referencing suspension suspend the fixture by feeding the 1/16" aircraft cable through the cable gripper. Move and level the fixture to specified position and tighten the cable gripper nut to lock the 1/16" steel cable.
2. Cut off excess cable.
3. Leave approximately 1/2" for minor adjustments. See Figure 3
4. Remove the screws extra screws in male joining bracket with screw driver
5. Slide both fixtures together
6. Put screws back place to join the two fixture together.
7. Slide the Light Shield into place on both sides.

Figure 7



SAVE THESE INSTALLATION INSTRUCTIONS

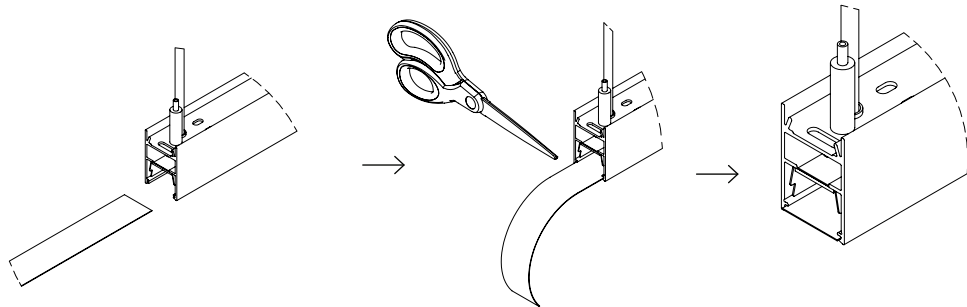
Row Mount Installation Instructions (Continued)

Slēk Series

Lens Install

Once row is hung, locate the LENS AND END CAP KIT. The Lens and End Cap Kit is comprised of one (1) roll in lens, one (1) End cap assembly, and one (1) #8—32 x 1/2" screw. Beginning at the Starter fixture, slide the roll in lens into the lens slot at the open end of the fixture run. Continue to slide in until the lens butts up against the far end cap. Trim the excess lens that remains on the end of the run after the lens is fully engaged with the far end cap. Use scissors butted up to the fixture extrusion to make this cut leaving 1/8" still protruding from the run.

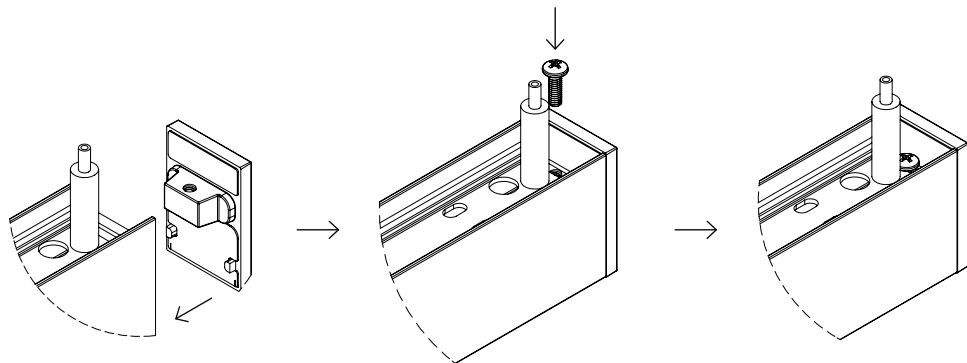
Figure 8



End Cap Install

Once lens is installed, locate the LENS AND END CAP KIT. Install End Cap on Starter fixture using one (1) #8—32 x 1/2" screw Phillips head screws and one (1) End cap.

Figure 9



General Luminaire Installation Instructions

GEO Series

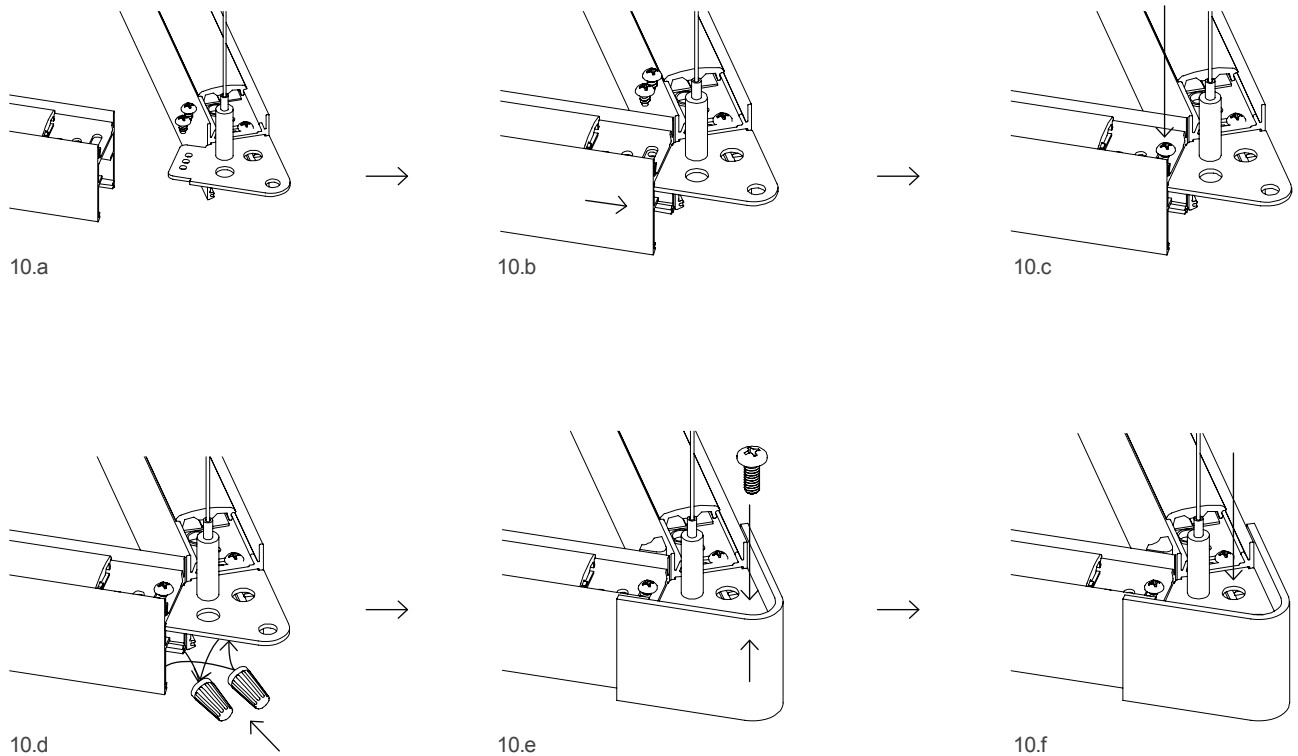
WARNING

Attempting to assemble a GEO Series fixture this is larger than 5ft on the ground and lifting into position may create stress at connection points and may result in damage and/or mechanical failure. Fixtures are meant to be installed at height.

REQUIRED TOOLS

- Power Drill w/ #2 Philips Head Bit - Torque ≤ 10
- Wire Strippers
- Box/Beam Level
- Clorox (or similar) Cleaner
 - In case of lens smudge during installation

Figure 10



SAVE THESE INSTALLATION INSTRUCTIONS

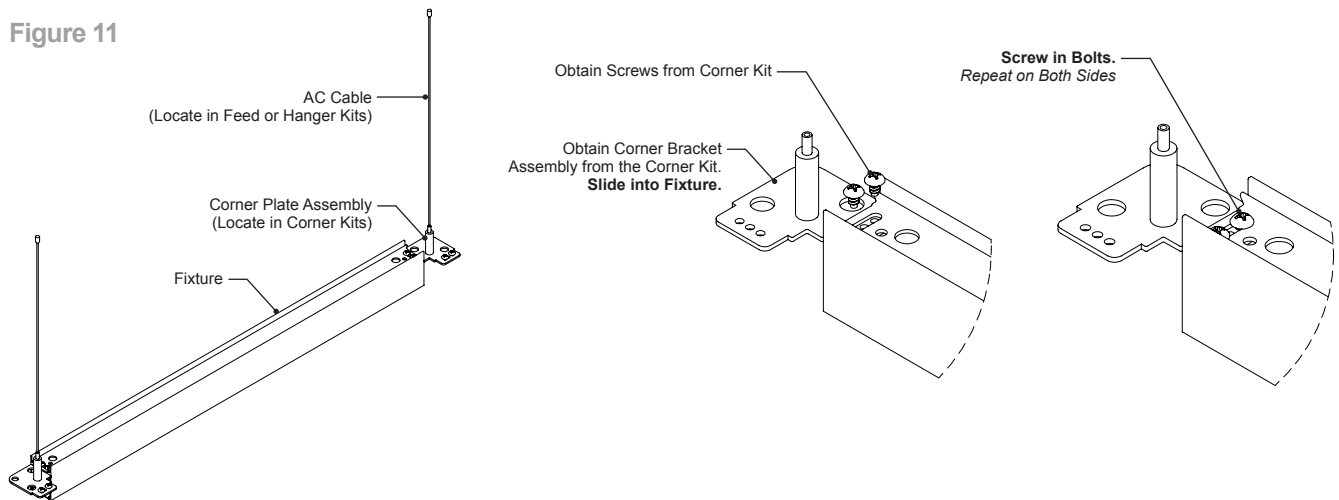
Pattern Installation Instructions

GEO Series

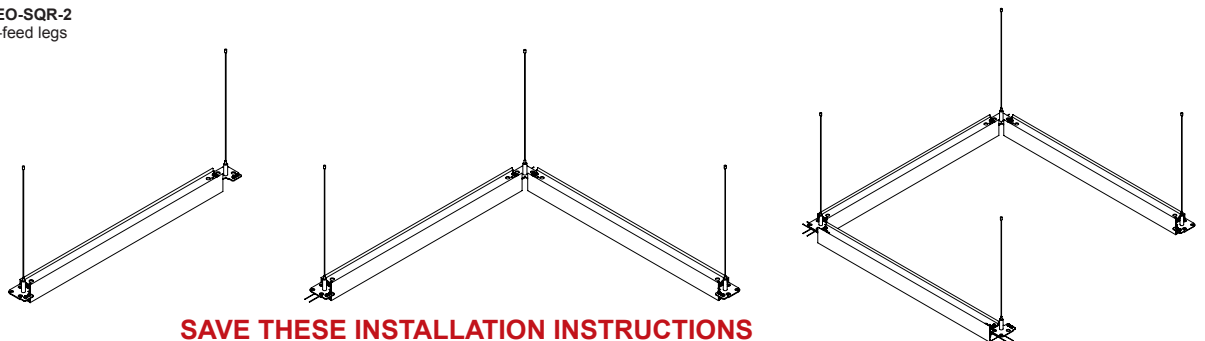
GEO: Non-Power Legs (-J or -S in the Fixture Part Number)

1. Locate and identify the Starter or Joiner fixture for the GEO pattern.
2. Install the Corner Bracket.
3. Locate the suspension cable locations as shown in the submittal drawing
4. Suspend the fixture by feeding the 1/16" aircraft cable through each cable gripper.
5. Move and level the fixture to specified position and tighten the cable gripper nut to lock the 1/16" steel cable.
6. Cut off excess cable.
7. Leave approximately 1/2" for minor adjustments. See Figure 3
8. Wire nut color corresponding wires together. See Figure 10
9. Locate the corner blocks and slide block on as seen in picture. See Figure 10
10. Tighten down 1/4-20 screw with screw driver. **NOTE: ENSURE WIRES ARE NOT PINCHED.** See Figure 10
11. Repeat Steps as required.

Figure 11



EXAMPLE: GEO-SQR-2
Joining all non-feed legs



SAVE THESE INSTALLATION INSTRUCTIONS

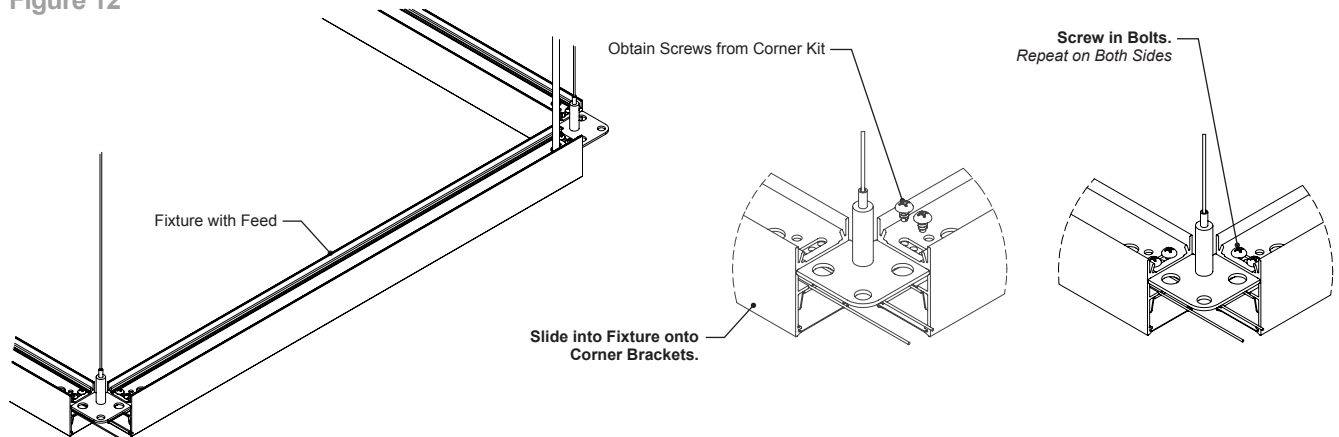
Pattern Installation Instructions (Continued)

GEO Series

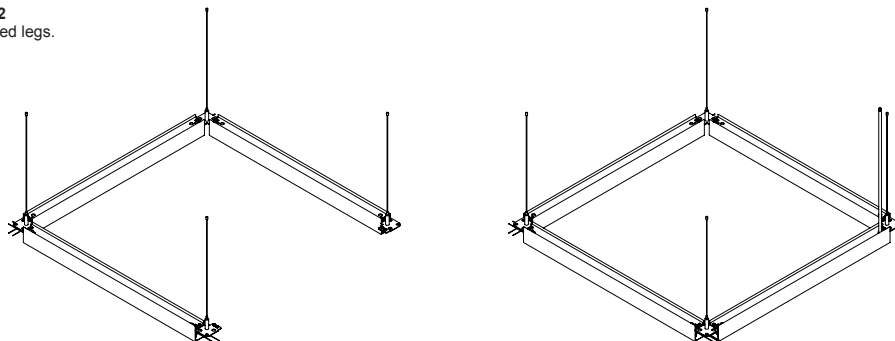
GEO: Power Legs (-E1, -E2, -E3 or -E4 in the Fixture Part Number)

1. Locate the power fixture in the pattern by referencing the submittal.
2. Install the Corner Bracket as shown in Figure 11.
3. Locate the suspension cable locations as shown in the submittal drawing.
4. Move and level the fixture to specified position and tighten the cable gripper nut to lock the 1/16" steel cable.
5. Cut off excess cable.
6. Leave approximately 1/2" for minor adjustments. See Figure 3
7. Wire nut color corresponding wires together. See Figure 10
8. Locate the corner blocks and slide block on as seen in picture. See Figure 10
9. Tighten down 1/4-20 screw with screw driver. **NOTE: ENSURE WIRES ARE NOT PINCHED.** See Figure 11

Figure 12



EXAMPLE: GEO-SQR-2
Add Feed leg to Non-Feed legs.



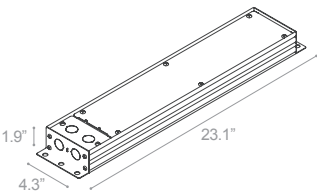
SAVE THESE INSTALLATION INSTRUCTIONS

Remote Power Unit

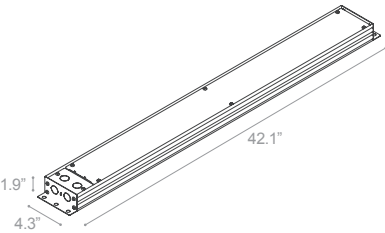
Slēk & GEO Series

Figure 14

SHORT REMOTE POWER UNIT



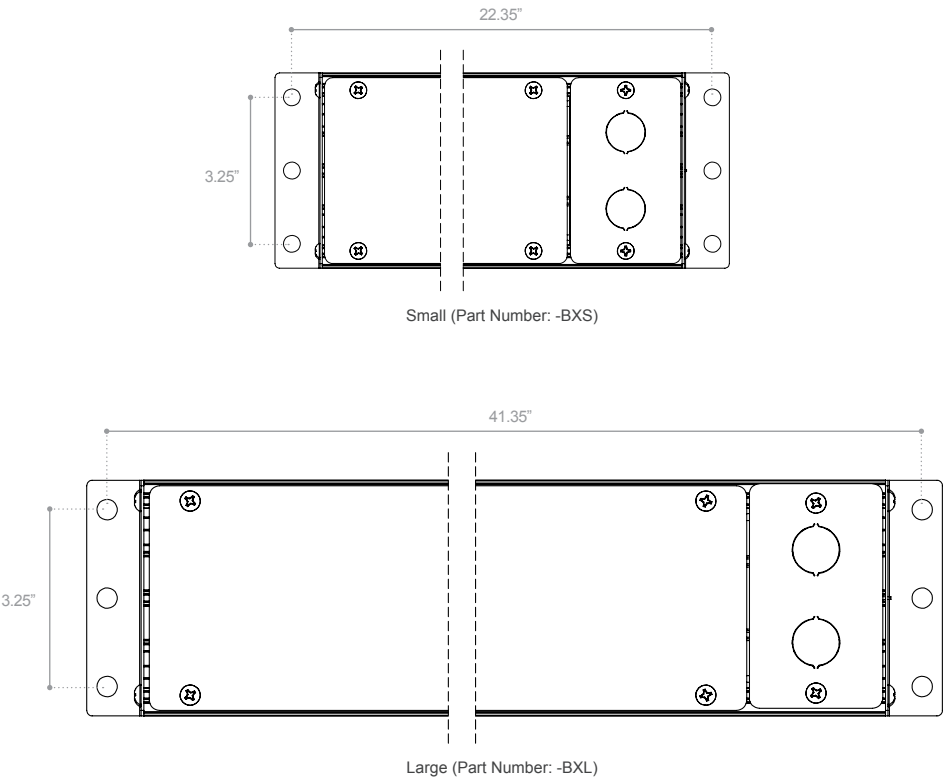
LONG REMOTE POWER UNIT



	SHORT REMOTE POWER UNIT	LONG REMOTE POWER UNIT
DISTRIBUTION		
Indirect/Direct (SLK-ID)	X	X
Direct (SLK-D)	X	X
MOUNTING		
Surface	X	X
Grid (T1 - T9 - SC)	X	X
J-Box	X	X
ADD-ON OPTIONS		
Separate Switching (SS-U/D)	X	X
Emergency Battery Pack (EM)		X
Emergency Transfer Switch (ETS)	X	X
IC RATED		
Approved		X

Figure 15

Mounting Hole Dimensions for T1, T9, SC, HC



SAVE THESE INSTALLATION INSTRUCTIONS

Remote Power Unit (Continued)

Slēk Series

T1, T9, SC Above Grid Install

1. Locate the correct remote power supply unit by referencing the submittal and match the remote power supply unit and the luminaire part number, see part number matching on page 2.
2. Remove the side mount clip and reinstall on the back outside of the remote power supply where needed. See Figure 17.
3. Clip in the remote power supply on to the t-grid. See Figure 17.
4. Secure the remote power supply to structure support above with a minimum #12 gauge support wire in accordance with local codes. See Figure 17.
5. Remove connection cover compartment on the remote power supply and remove all needed knock-outs. See Figure 18.
6. Review wire legend and wire according to local codes. See Figure 19.

Figure 16

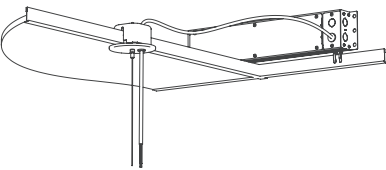


Figure 17

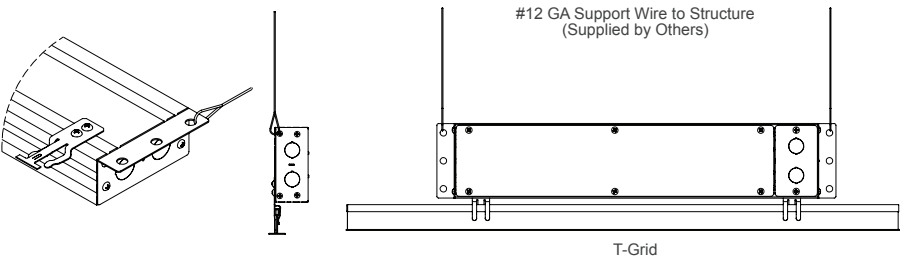
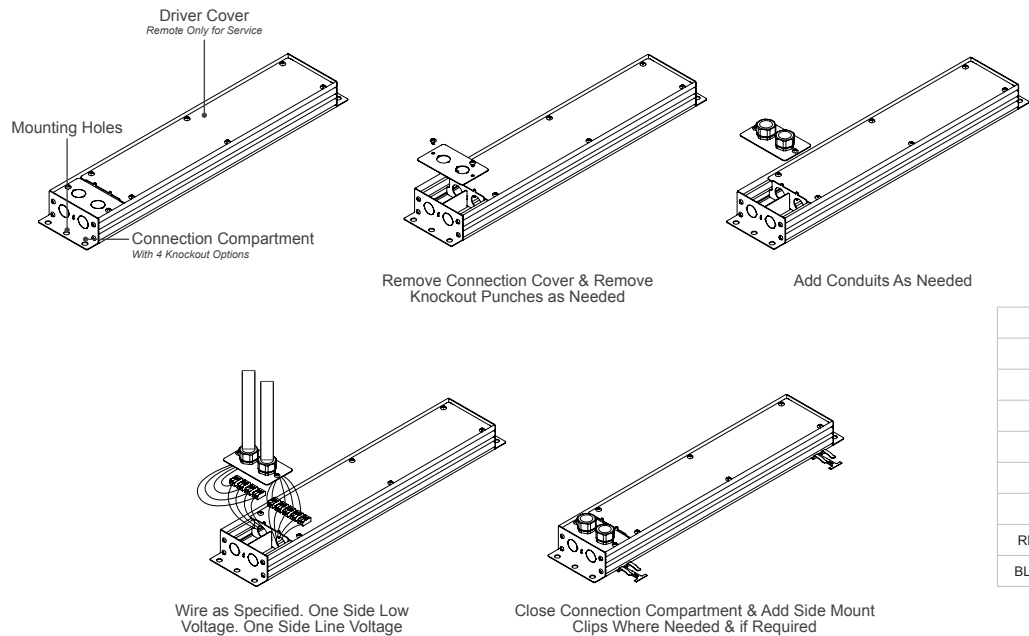


Figure 18



WIRE LEGEND

BLACK	HOT	LINE VOLTAGE
WHITE	NEUTRAL	LINE VOLTAGE
GREEN	GROUND	
PINK	DIMMING	0-10V DC
PURPLE	DIMMING	0-10V DC
RED	DIRECT (+)	0-10V DC
BLUE	DIRECT (-)	0-10V DC
RED/WHITE	INDIRECT (+)	0-10V DC
BLUE/WHITE	INDIRECT (-)	0-10V DC

SAVE THESE INSTALLATION INSTRUCTIONS

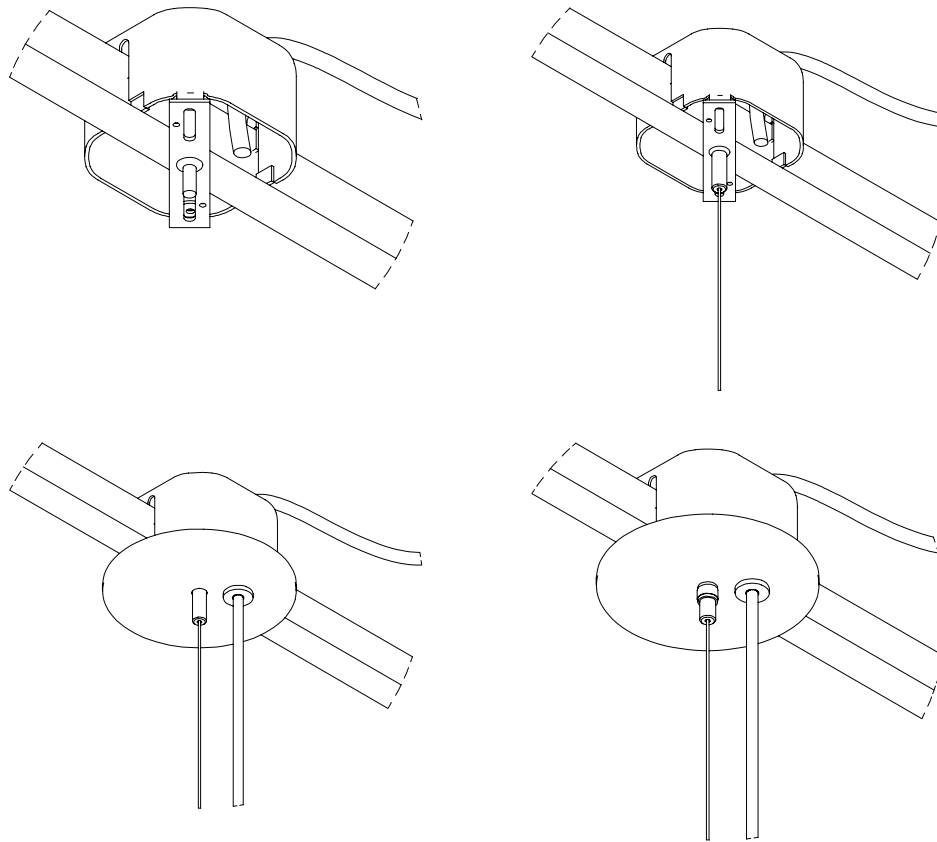
Hanging Hardware Installation

Slēk & GEO Series

T1, T9, SC Above Grid Install

1. Determine mounting cable spacing centers from factory shop drawing or ordering processing specification sheet.
2. Install Cross bracket (provided) and slotted 4" J-box (not provided). See Figure 19
3. Insert AC cable supplied in kit through ceiling coupler in kit and attach it to the cross bracket.
4. Remove threaded canopy support ring from the coupler and slide the canopy into the AC Cable. Order of Parts can be see in Figure 23.
5. Insert AC Cable into the luminaire.
6. Feed the feed cable though the canopy and wire/feed through the J-Box per local code.
7. Slide the canopy to the ceiling and secure with the support ring.
8. Install Strain relief and attach supplied tie straps around feed cord and cable at a minimum of 36" on center.

Figure 19



Remote Power Unit (Continued)

Slēk Series

HC Exposed Install

1. Locate the correct remote power supply unit by referencing the submittal and match the remote power supply unit and the luminaire part number, see part number matching on page 2.
2. Remove the connection cover and Driver cover
3. Find the AC Gripper center on the remote power supply. Mount the remote driver to the ceiling with appropriate mounting hardware (not supplied). See Figure 21 and Figure 22 for mounting dimensions.
4. Reinstall the Driver cover.
5. Insert AC cable supplied in kit through ceiling coupler in kit and attach it to the cross bracket.
6. Feed the feed cable through the connection cover.
7. Review wire legend and wire according to local codes. See Figure 18.
8. Reinstall the Connection cover and secure with the support ring.
9. Install Strain relief and attach supplied tie straps around feed cord and cable at a minimum of 36" on center.

Figure 20

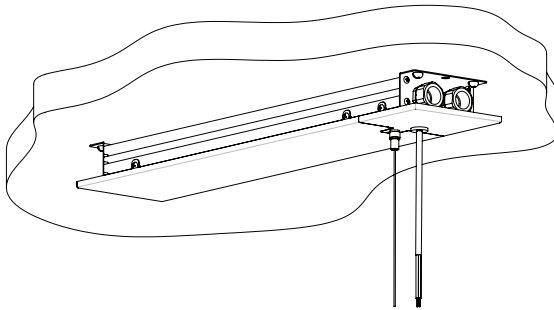


Figure 21

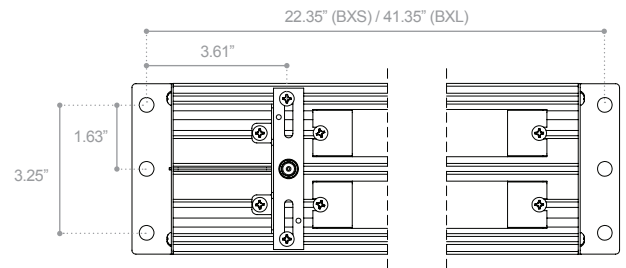
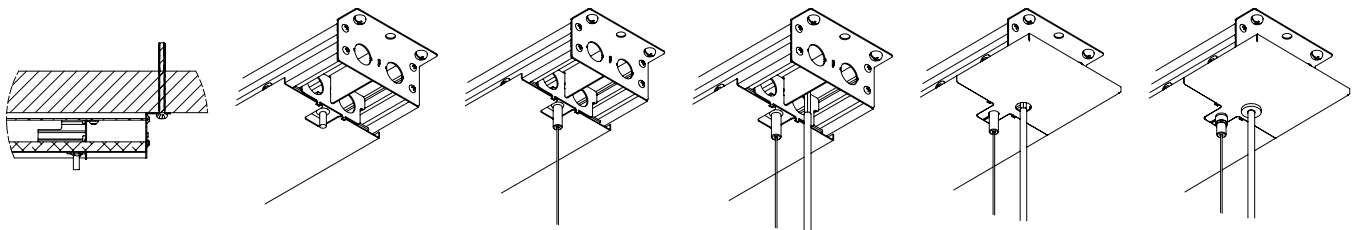


Figure 22



SAVE THESE INSTALLATION INSTRUCTIONS

Suspended Luminaire Installation Instructions (Continued)

Off-Grid Mounting

NON FEED CABLE/CANOPY ASSEMBLY

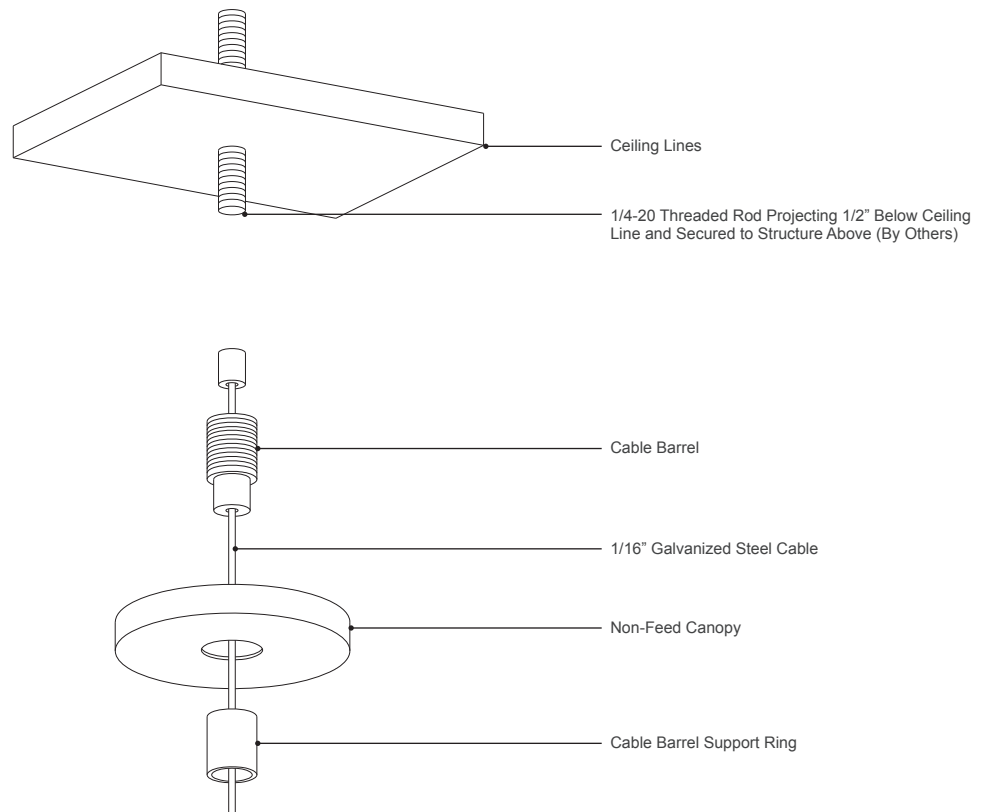
1. Determine mounting cable spacing centers from factory shop drawing or order processing specification sheet.
2. Install 1/4-20 studs projecting from the finished ceiling line 1/2".
3. Insert cable supplied in kit through ceiling coupler in kit and attach to 1/4-20 stud securely. Remove threaded canopy support ring from coupler and slide canopy then support ring over cable and up to finished ceiling line. Tighten support ring to locate canopy in place.
4. Raise luminaire to cable assembly and route cable through the center of the adjustable cable fitting loosening the locking cap enough to allow cable to enter fitting. Feed cable through the adjustable fitting until desired mounting height is attained. Luminaire will be retained at the last point of adjustment. Tighten locking cap onto retainer stem.

Note: If It Becomes Necessary To Re-Adjust Luminaire Height, Loosen Locking Cap And Depress Retainer Stem While Adjusting To Desired Position.

WARNING

Be Certain To Support Luminaire Independently Of Cables When Depressing Retainer Stem.

Figure 23



SAVE THESE INSTALLATION INSTRUCTIONS

Suspended Luminaire Installation Instructions (Continued)

On-Grid Mounting

NON FEED CABLE/CANOPY ASSEMBLY

1. Determine mounting centers from factory shop drawing or order processing specification sheet.
2. Installation of IDS clip onto T-BAR at appropriate locations (Reference Step 1 and Figure 24)
 - A. Assemble 1/4-20 stud and clip. Start stud into recessed square hole, grasp clip in hand and depress TAB A with thumb. Pull stud into place and release TAB A.
 - B. Separate clip into two parts by bending at TAB B.
 - C. Place PART X on T-BAR and insert base tab on part into slot. Close PARTS X and Y together locking with TAB C.
3. Secure IDS clip to structural support above with minimum #12 gauge support wire in accordance with local codes. (Reference Figure 25)
4. Insert cable supplied in kit through ceiling coupler in kit and attach to 1/4-20 stud on IDS clip securely. Remove threaded canopy support ring from coupler and slide canopy then support ring over cable and up to finished ceiling line. Tighten support ring to secure canopy in place.
5. Raise luminaire to cable assembly and route cable through the center of the adjustable cable fitting, loosening the locking cap enough to allow cable to enter fitting. Feed cable through the adjustable fitting until desired mounting height is attained. Luminaire will be retained at the last point of adjustment. Tighten locking cap onto retainer stem.

Note: If It Becomes Necessary To Re-Adjust Luminaire Height, Loosen Locking Cap And Depress Retainer Stem While Adjusting To Desired Position.

WARNING

Be Certain To Support Luminaire Independently Of Cables When Depressing Retainer Stem.

Figure 24

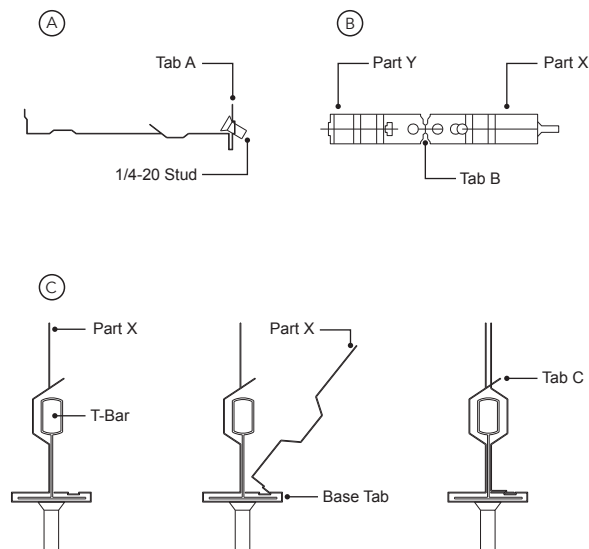


Figure 25

